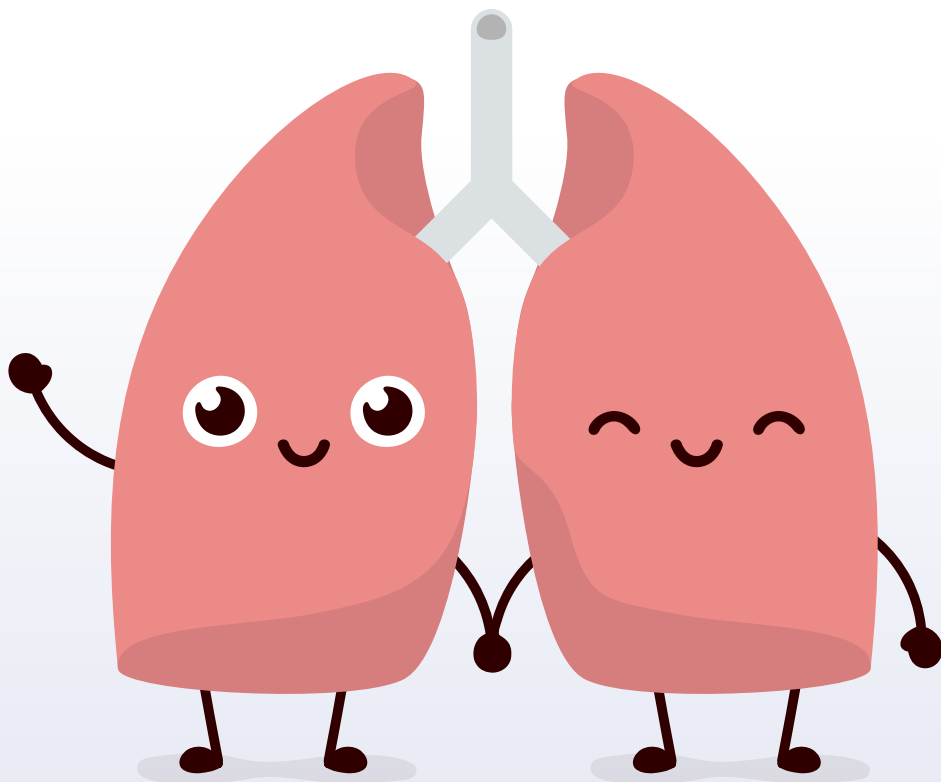




Lung  
Cancer  
Screening

**NHS**

Somerset, Wiltshire,  
Avon and Gloucestershire  
Cancer Alliance



# LUNG CANCER SCREENING

[www.swaglunghealthcheck.nhs.uk](http://www.swaglunghealthcheck.nhs.uk)

## I have not been offered a CT scan. What does this mean?

**Either**, our records show you have had a CT scan of your chest within the last year. If you have had this done then it is likely that any serious lung disease including lung cancer would have been picked up. The small harms associated with a having CT scan, (e.g. radiation dose although it is very low), are likely to outweigh any benefits of having a further CT scan now.

**OR Good news!** Your lung risk score is below the risk threshold where we can refer you for a CT scan. Current research within the UK Lung Cancer Screening trial suggests that, at your current risk score, if you have a CT scan it would not have a high chance of finding an early lung cancer.

The small harms associated with a having CT scan are likely to outweigh any benefits, (e.g. radiation dose, although it is very low).

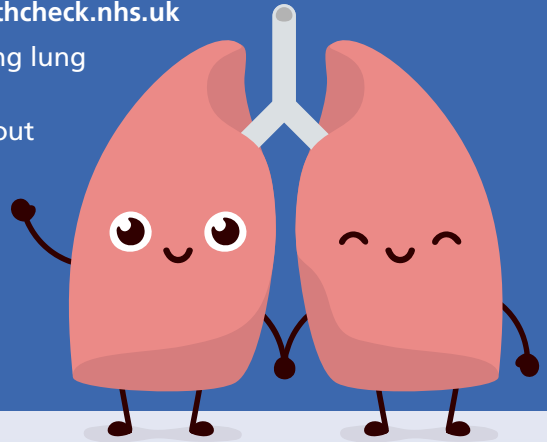
### What you should do now:

You can reduce your risk of lung cancer and any other lung disease by following the advice you were given during your telephone appointment and found in the 'healthy lungs' section of our website: <https://swaglunghealthcheck.nhs.uk>

At present you have no worrying lung symptoms, which is good.

If in future you are worried about your lungs or you do get any worrying lung symptoms it is important to go and see your GP early.

The earlier you go the better your chance of treatment/cure if you have anything seriously wrong.



Thank you for attending this appointment. Today we gave you good news but also some very helpful information for the future.

For more support, please visit:  
[www.swaglunghealthcheck.nhs.uk](http://www.swaglunghealthcheck.nhs.uk)

With thanks to Liverpool, Knowsley & Halton Lung Cancer Screening Programme for curating the leaflet