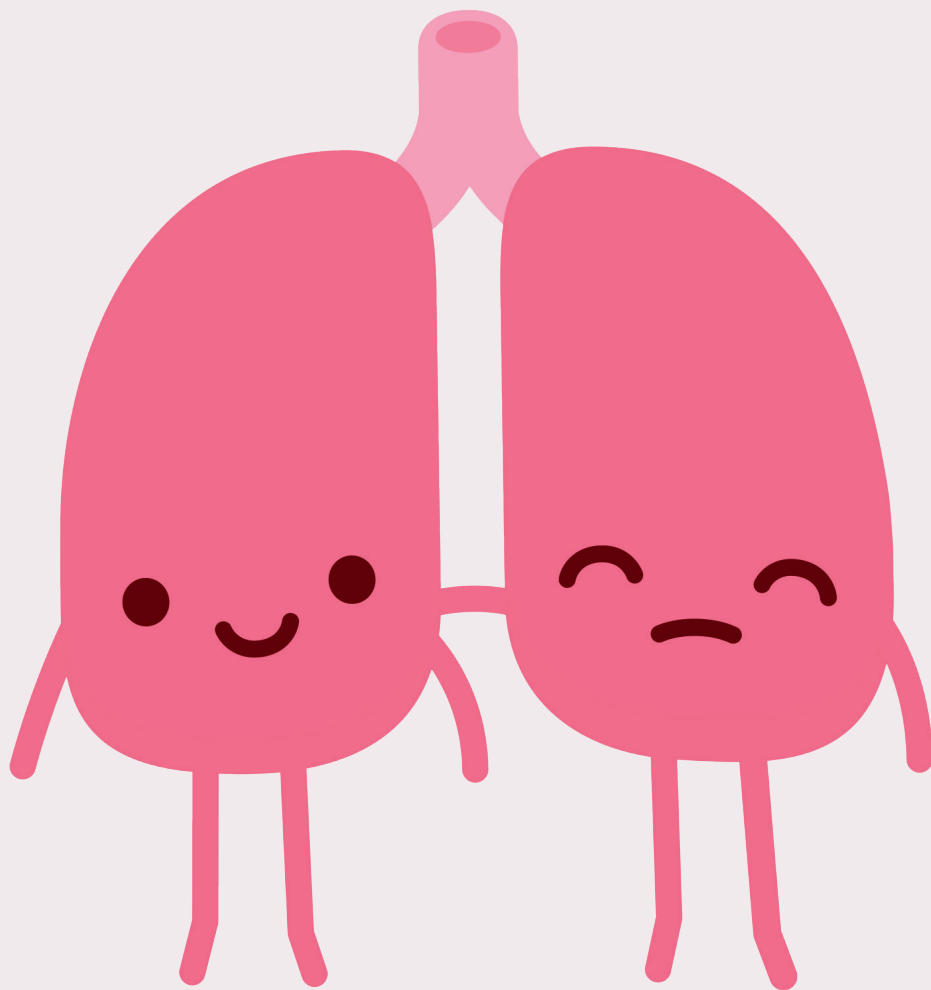




Targeted Lung
Health Check
Programme



Somerset, Wiltshire, Avon
and Gloucestershire
Cancer Alliance



WHAT HAPPENS AFTER MY SCAN?

www.swaglunghealthcheck.nhs.uk

When can I expect my results?

Within 4 weeks of your scan, you will receive a letter explaining your result. This will include information around what your scan showed, what it means for you and the next steps. A copy of your CT report will also be sent to your GP.

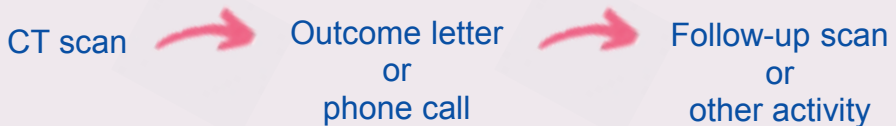
What are the possible outcomes?

If nothing of concern is found on your scan, your letter will say this and you will be asked to return for a routine follow-up scan in 2 years' time. You will receive a separate invitation letter for the follow-up scan nearer the time.

If something minor, like a "nodule" is found, you will be asked to return for an earlier follow-up scan at 3 or 12 months.

In the unlikely **case** we find something that requires further action, e.g. referral to a hospital clinic or another scan, we will contact you via telephone within a week of your scan.

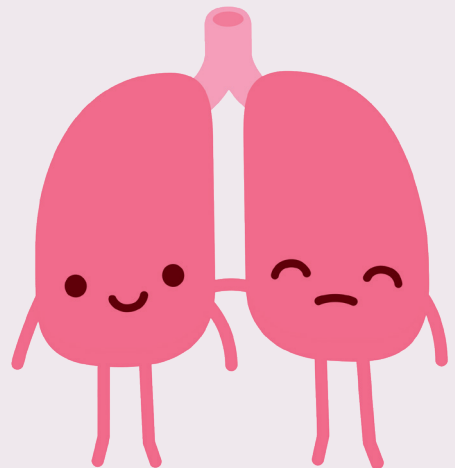
About half of all scans show emphysema or furring up of the vessels around the heart (coronary artery calcification). If your scan shows this, we will say so in your letter, and advise on what you should do. A lot of people are already on the right treatment, while others may be advised to see their practice nurse or attend an over 40s Health Check for a check-up.



Please wait 4 weeks to hear from our team. If you haven't heard after this time, please contact us on:

0117 233 8127

swag.lunghealthcheck@nhs.net



www.swaglunghealthcheck.nhs.uk